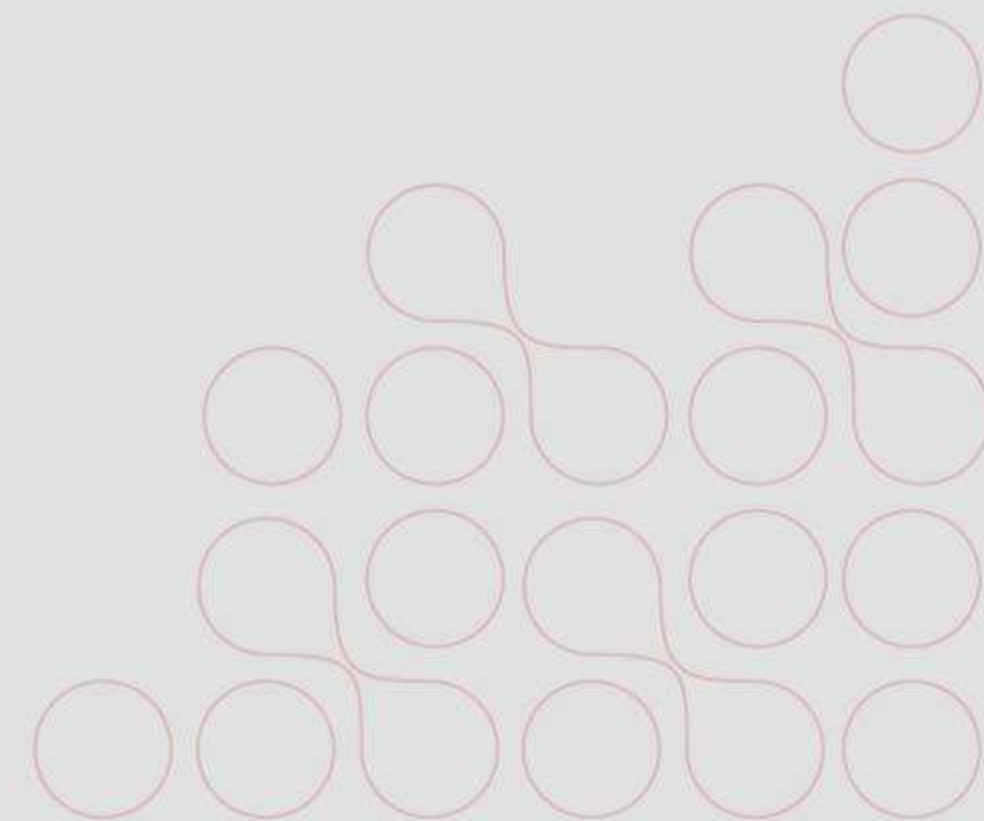




# ANNUAL REPORT 2022

Moving Towards Recovery,  
Reimagining the National Health System



**☰ LIST OF CONTENTS**

ABOUT US

OPENING SPEECH

KALEIDOSCOPE OF 2022

THE NEW FACE OF CISDI

OUR WORK

STRENGTHENING PRIMARY  
HEALTH SERVICES

STRATEGIC PLANNING FOR HEALTH SYSTEM REFORM

RESEARCH-BASED ADVOCACY:  
SOCIAL DETERMINANTS AND HEALTH POLICY

TRACK SDGs

STUDY AND PUBLICATION

IMPACT AND REACH MAP

OUR PARTNERS

CISDI IN PUBLIC

FINANCIAL ACCOUNTABILITY

LIFE AT CISDI

2

3

4

6

7

11

15

21

22

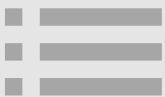
28

29

33

34

35



# ABOUT US

CISDI is a nonprofit organization that aims to advance the health sector development and strengthen the health system through **research, advocacy, and participative interventions.**

## **Vision:**

Helping to build an **equal, empowered, and prosperous** Indonesian society with a healthy paradigm.

## **Mission:**

1. Building strategic partnership and forging collaborations with diverse stakeholders to reach development goals.
2. Strengthening public health policy implementation.
3. Encouraging active youth and communities participation on development issues.
4. Advocating equal access to health care.
5. Building awareness on public health issues.

## **Why we are different?**

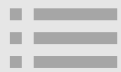
Established in 2014, CISDI has been focusing on the issues of public health development through cycles of evidence-based research, intervention, and advocacy.

Our team comes from various disciplines to achieve a comprehensive solution to the issues. CISDI also opens space for participation for community members who want to create access to services and a fair and equal health system.

**Board of Trustee** | Diah Satyani Saminarsih, Wicaksono Sarosa  
**Advisory Board** | Akmal Taher, Ani Rahardjo, Anindita Sitepu, Beka Ulung Hapsara, Christian Somali, Fasli Jalal, Herawati Sudoyo, Rudiantara

**Chief Executive Officer** | Diah Satyani Saminarsih  
**Chief Strategist & Acting Chief Primary Health Care** | Yurdhina Meilissa  
**Chief Transformation & Operation Officer** | Gatot Suarman Ilyas  
**Chief Research & Policy Officer** | Olivia Herlinda  
**Chief Communication Officer** | Sadika Hamid





## REMARKS

# A JOURNEY TO A HEALTHY, JUST, AND FAIR INDONESIA

**Diah Satyani Saminarsih, Founder & CEO of CISDI**

The contribution that CISDI has made in the past eight years in strengthening the Indonesian health system started by distributing health worker teams to remote areas through the Pencerah Nusantara program. To this day, CISDI has evolved to be a multi-program organization that focuses on healthcare development. In conducting our interventions on every healthcare aspect, we use the end-to-end approach, from scientific researches, advocations, campaigns, to grass-root level interventions. These efforts aim to create a healthy, fair, and equal Indonesia.

In 2022, we kept creating innovations through various approaches and new sectors. Started by Lokapala and Heath Outlook 2022, CISDI has always been developing grass-root innovations. The Pencerah Nusantara program that has been being the symbol of CISDI also enlarged its scope through PN Prima (Program Puskesmas Responsif-Inklusif dan Masyarakat Aktif/The Responsive-Inclusive Puskesmas Program and Active Society) that focuses on reaching vulnerable community through strengthening society-based surveillance. After focusing on strengthening service capacity and placement of health workers at the primary health care level through Pencerah Nusantara, PN Prima expanded the target coverage of the program to the cadres closest to the community. Meanwhile, the PUSPA program in collaboration with West Java that encourages innovation in handling COVID-19 is currently working transforming primary health services in West Java and will continue until 2024. On the other hand, the Health Learning Platform is starting to explore cooperation with the private sector through a program that strengthen the capacity of public health actors at the Kantingan Mentaya Project, Sampit, Central Kalimantan.

In a research-based advocacy, not only do we continue our programs on tobacco control, sugar-sweetened beverages control, and research using foresight methodology to help organize the future of primary health care, we also started health policy advocacy at the global level in 2022. At the G-20 Summit, in collaboration with the Joep-Lange Institute, Pandemic Action Network and Equal International, we became the originator of the idea and led the civil society-led side event on the draft governance of a financial intermediary fund (FIF) for pandemic prevention, preparedness and response. The launch of the FIF platform was inaugurated by President Joko Widodo at the G-20 Summit on 12 November 2022 under the name Pandemic Fund.

While exploring many new frontiers in 2022, CISDI always remembers our first steps in strengthening Indonesia's health system. For this reason, in 2022, we were returning to our roots, returning to CISDI's vision as a civil society organization that puts forward the importance of health system strengthening, especially in primary health services. Therefore, we held the Satu Dekade Pencerah Nusantara (One Decade of Pencerah Nusantara) event, as an appreciation for the positive changes that occurred during the implementation of the Pencerah Nusantara program and to reemphasize our main commitment as an organization: creating a healthy, fair, and equal Indonesia.

After four years of study and advocacy to strengthen the implementation of tobacco excise for health, this year, we tried a new approach by producing and launching a documentary entitled "Di Balik Satu Batang". This film seeks to provide a balancing narrative in the tobacco excise discourse, which is often used as a scapegoat for the welfare of farmers and tobacco workers.

Our efforts to control the consumption of sugar-sweetened beverages (SSBs) this year focused on studying and gathering public support for the implementation of the SSBs excise tax. Through the Forum for Young Indonesian program series, at the end of the year, we managed to collect more than 15,000 signatures on the change.org petition.

To complete the study with the foresight methodology in the three strategic domains of national health development, after the foresight for health financing (CISDI, 2021) the foresight for managing the future of primary health services (CISDI, 2022) are launched to the public; starting in 2023, CISDI has started working on a foresight study on human resource in health.

***Hopefully, this annual report doesn't just provide a year's worth of flashbacks; but also provides learning to think, innovate and act more appropriate and impactful.***







# KALEIDOSCOPE 2022

**6 JAN** – CISDI was holding a creative content contest "**Perjalanan Mencari Titik Terang**" to gather aspirations regarding better handling of the pandemic.

**15 JAN** – **Omicron cases in Indonesia were soaring.** A total of 569 cases came from foreign travelers and 155 cases were local transmissions.

**27 JAN** – **LOKAPALA 3.0 "Habis Gelap, Terbitkah Terang?"** and launched the "**Health Outlook 2022**" with the same headline to provide the government with seven recommendations for handling the pandemic.

## JANUARY

## FEBRUARY

**14 FEB** – Through a policy document entitled Mission for Vaccine Equity amidst a Global Pandemic: The Case of Indonesia, CISDI was selected to be further involved in Task Force 6 T20 in the global health security agenda and handling of COVID-19.

**24 FEB** – **Occurrence of one BA.2 Subvariant**, which has been found in 80 countries and 50 states of the United States of America.

## MARET

**2 MAR** – The momentum of the two years of the COVID-19

**16 MAR** – The public lecture and public discussion "**Menata Masa Depan Layanan Kesehatan Primer Indonesia**" (Organizing the Future of Indonesian Primary Health Services) was organized by CISDI together with the Indonesian Academy of Sciences (AIPI).

**23 MAR** – "**Pelepasan Seribu Kader Prima - Jangkau yang Tertinggal, Rangkul yang Rentan**" (Deployment a Thousand Prima Cadres - Reach the Left Behind, Embrace the Vulnerable) as the start of a program that intervenes to strengthen primary health services in Bandung City, Bekasi Regency, and Depok.

**31 MAR** – Public discussion "**Urgensi Implementasi Kebijakan Cukai Minuman Berpemanis dalam kemasan di Indonesia**" - Urgency implementation of sugar-sweetened beverages tax excise in Indonesia)

## APRIL

**12 APR** – Indonesia passed the Sexual Violence Law.

**21 APR** – CISDI held a panel discussion: **Leadership Series on Primary Health Care - Wujudkan Semangat Kepemimpinan untuk Masyarakat Indonesia yang Sehat, Adil, dan Setara** (Leadership Series on Primary Health Care-Creat the Sense of Leadership for a healthy, just, and equal Indonesian society).

WHO announced 169 cases of mysterious hepatitis after 10 cases were reported in England.

**3 MEI** – The Indonesian Ministry of Health held a press conference regarding the death of 3 children allegedly due to mysterious hepatitis.

**17 MEI** – Through a press statement, **President Joko Widodo decided to ease the use of masks in open area.**

**19 MEI** – The new 'Omicron' BA.4 and BA.5 sub-variants were spreading in dozens of countries including Singapore.

**20 MEI** – CISDI joined the **Transform Health Indonesia Coalition**, a national coalition committed to achieving Universal Health Coverage 2030 through the use of digital technology.

**24 MEI** – Program launch of **PUSPA 2022** and the deployment of PUSPA Health workers.

**30 MEI** – **Pre-deployment training** of PUSPA Health workers.

**31 MEI** – Celebrating World No Tobacco Day through a series of campaigns during the "**Kukira Kau Sehat**" festival to help control risky consumption.

## MEI

**17 JUN** – CISDI opened "**Youth Representative Council**" recruitment for tobacco control.

**22 JUN** – CISDI participated in the **AVPN Global Conference in Bali** and shared the experience and journey of Pencerah Nusantara.

**23 JUN** – CISDI held a Twitter Space entitled "**Mengawal Isu Kekerasan Seksual Pasca Pengesahan UU TPKS**".

**28 JUN** – The **RKUHP was planned to be ratified by the government in early July 2022**, at the same time the Maternal and Child Welfare Bill was also included in the National Legislation Program.

**29 JUN** – Together with the Joep Lange Institute (JLI), CISDI launched a publication in the **Lancet "A New Paradigm is Needed for Financing the Pandemic Fund"**



**1 JUL –** CISDI participated in discussions at the 2022 Global Health Security Conference in Singapore and reviews global health security.

CISDI and Arkademy Project launched “KELANA PN-PRIMA”, a scholarship project and photography workshop to document stories of the cadres of puskesmas in Bekasi Regency, Bandung City, and Depok.

**8 JUL –** CISDI has officially started collaborating with the Government of West Java for the implementation of the Puskesmas Terpadu dan Juara (PUSPA) until 2024.

Twitter Space entitled "Pentingnya Perspektif Kesehatan dan Gender dalam Penyusunan RKUHP".

**26 JUL –** WHO has officially declared monkeypox as a global health emergency.

DPRemaja for tobacco excise advocacy selected 20 elected members from 1,176 applicants.

## AGUSTUS

## JULI

**4 AGUSTUS –** CISDI participated in the T20 Indonesia discussion, delivering a presentation entitled "Optimising Access to Diagnostics, Therapeutics, and Vaccines During the COVID-19 Pandemic"

**19 AGUSTUS –** CISDI released a policy document "Pentingnya Perspektif Kesehatan dan Gender dalam Proses Penyusunan RKUHP"

**20 AGUSTUS –** The Ministry of Health announced the first monkeypox case in Indonesia which was detected in Jakarta.

**26 AGUSTUS –** The Indonesian Ministry of Health launched SATUSEHAT, a digital health service platform that integrates health data and data exchange protocols.

**30 AGUSTUS –** Launching of research results "*Ilusi Kemiskinan dan Pengalihan Belanja Rumah Tangga karena Konsumsi Rokok*".

Two types of local COVID-19 vaccines are approved under the names Inavac and Indovac.

**29 SEPT –** CISDI and change.org held a discussion on Twitter Space entitled “Janji Pahit Minuman Manis - Mengontrol Konsumsi Gula untuk Lindungi Masyarakat.”

**28 SEPT –** Towards one decade of Pencerah Nusantara, CISDI held a competition 'Inovasi Sehat Puskesmas Berdaya' to help find some new innovations for Puskesmas as the primary health service.

**17 SEPT –** Through TRACK SDGs, CISDI held Youth Gathering #1 entitled "Youth as an Accelerator to Achieve Universal Health Coverage"

Forum for Young Indonesians highlight events: Dunia Tipu-tipu Minuman Berpemanis dalam Kemasan.

**9 SEPT –** The government issued Regulation of the Minister of Health No. 24 of 2022 concerning Medical Records.

**8 SEPT –** CISDI and the Indonesian Academy of Sciences (AIPI) submitted a Primary Health Care foresight study document to the Indonesian Ministry of Health through a public discussion attended by various parties.

## SEPTEMBER

## OKTOBER

**6 OKT –** More than 11.000 people signed and agreed to the tax excise on SSBs.

**14 OKT –** Together with KOLASÉ (Kolab Sehat), CISDI held a webinar "Mewujudkan Keterwakilan Data Kelompok Rentan yang Berkeadilan lewat Tata Kelola Data Kesehatan."

**15 OKT –** Through TRACK SDGs, CISDI held Youth Gathering #2 entitled "Engaging Youth for Climate Resilience."

**20 OKT –** The Indonesian Minister of Health revealed three dangerous chemicals that cause acute kidney failure in children found in locally produced drugs.

Subvarian Omicron XBB also known as Gryphon dominated 54% cases of COVID-19 di Singapura.

**29 NOV –** Public discussion and dissemination of research "Elastisitas Harga Permintaan untuk Minuman Berpemanis dalam Kemasan (MBDK)".

**24 NOV –** A premiere of a documentary movie "Behind One Stick" which uncovers hidden narratives in the discourse on cigarette excise tax increases.

**15 NOV –** The G20 Summit under the Indonesian presidency took place in Bali.

**14 NOV –** The G20 side event initiated by CISDI carried the theme 'Redesigning Pandemic Prevention, Preparedness, and Response: Lessons Learned and New Approaches'

**12 NOV –** Celebrating the International Diabetes Day, Forum for Young Indonesians presented an art installation "Monster Gula Tersembunyi di Balik Minuman Berpemanismu" in Christina Martha Tiahahu park, South Jakarta.

**5 NOV –** The celebration of 'Satu Dekade Pencerah Nusantara' presented the history of Pencerah Nusantara, held a public discussion, and won the innovation of primary health care.

**2 NOV –** Rapat Dengar Pendapat Umum (RDPU) “Muda Merebut Kembali Ruang Aspirasi, acara puncak rangkaian DPRemaja 2022

## DESEMBER

## NOVEMBER

**6 DES –** The House of Representatives passed the Criminal Code Bill into law.

**11 DES –** Youth Gathering #3: Promoting Decent Youth Employment: Rights, Protection, Voice, and Representation

**14 DES –** The Minister of Finance of the Republic of Indonesia increased the excise duty and suggested selling price (SRP) for each class of tobacco products through Minister of Finance Regulation (PMK) No. 191/PMK.010/2022.

**21 DES –** CISDI through the Health Learning Platform collaborated with PT Rimba Makmur Utama (RMU) to improve the competence of health workers and cadres in Sampit, Central Kalimantan.

**26 DES –** President Joko Widodo drafted a plan to ban the sale of cigarettes through Presidential Decree No. 25 of 2022 concerning the 2023 Government Regulation Preparation Program.

**30 DES –** President Joko Widodo revoked the PPKM status that was in effect in Indonesia



# THE NEW FACE OF CISDI

## A COMMITMENT TO A HEALTHY, JUST, AND EQUAL INDONESIA

Since 2014, CISDI's commitment to advancing the development of the health sector and strengthening the health system has been getting stronger, but this condition was not reflected in the previous visual identity. To show organizational evolution and strengthening commitment, we decided to change the logo. After going through a long creative process, a new identity is created that is more in line with the character and vision of the organization.

### Closer and More Relevant

We chose a logo with a modern design, using lowercase letters that convey a friendly impression but also symbolize forward-thinking. This resembles CISDI's work pattern which targets directly the community as well as being innovative.

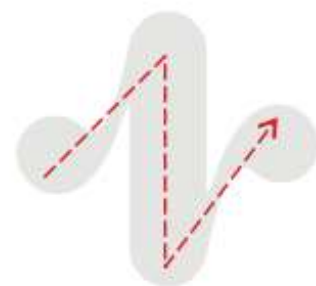
### Three Key Meanings

The logogram at the right top of the organization name has three key meanings:



#### Health

The cross shape symbolizes CISDI as an organization that focuses on public health issues.



#### Development

The up-and-down flow symbolizes development that always goes in a better direction. The line graphic element shows a pattern of work that is always data-driven.



#### Connection

Circles and connected objects symbolize the relationship and collaboration between various parties. Every element that works with CISDI has the same mission: to promote health development.

With the launch of this new logo, CISDI is committed to continuing its work to advance the development of the health sector and strengthen the public health system. In addition, we hope that this momentum can strengthen the space for collaboration between parties and community participation to create a healthy, just, and equal society.





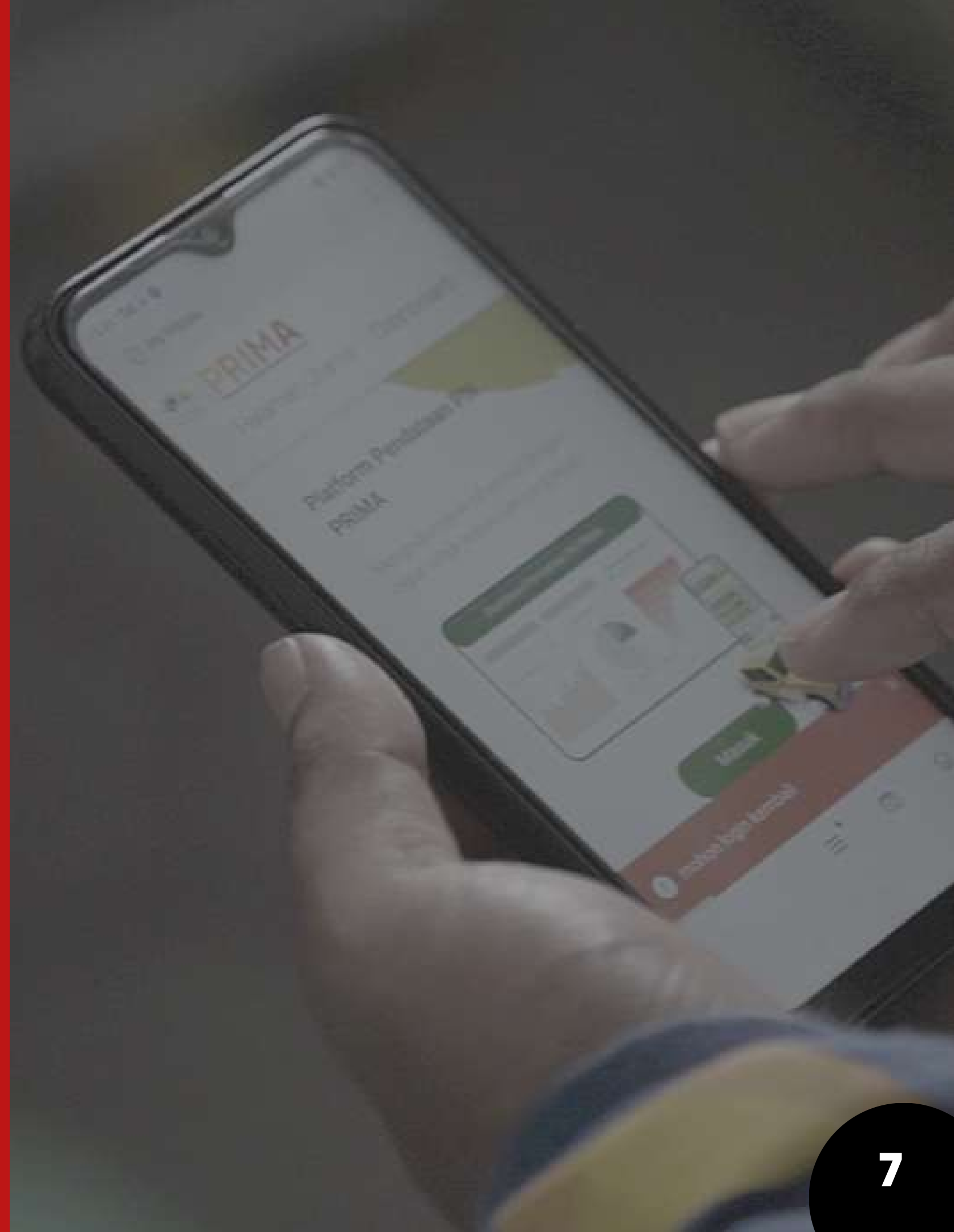


## OUR WORK

# STRENGTHENING PRIMARY HEALTH CARE

Understanding the role of the puskesmas as the foundation of the health system in Indonesia, CISDI continues to focus on its commitment to support the improvement of the quality of primary health services. Efforts to focus on strengthening primary health services are made to reorganize the existence and function of essential services which have been in disarray due to the disruption of the pandemic.

We carry out efforts to strengthen primary health services through direct interactions with service providers and the community. We carry out this journey with public health interventions with PN PRIMA, PUSPA, Health Learning Platform, and solutions powered by artificial intelligence for non-communicable disease detection.





# PN PRIMA

## (PENCERAH NUSANTARA PUSKESMAS RESPONSIF INKLUSIF MASYARAKAT AKTIF BERMAKNA)

In 2022, the Puskesmas Responsif-Inklusif Masyarakat Aktif Bermakna (PN PRIMA) is ready to be implemented. In its journey, PN PRIMA has worked with 1,004 PRIMA cadres and 21 puskesmas in Bandung City, Depok City, and Bekasi Regency with a focus on bringing access closer while restoring the quality of essential health services affected by COVID-19.

The meaning of 'inclusive' in the name PN PRIMA is meant to reach out to vulnerable groups, which include the elderly, disabilities, people with health risks, to gender and social minority groups. Throughout the year, PN PRIMA managed to reach 22,374 vulnerable groups to participate in data collection activities, receive assistance, access to vaccinations, and engage in health efforts to prevent the risk of non-communicable diseases and malnutrition.

Cadres become one of the keys to creating more meaningful participation by reaching the 'unreached'. For this reason, the PN PRIMA program framework also encourages the capacity building of cadres. Through a series of competency and behavior mapping, we are working with local governments and various parties to hold a series of capacity building training that is focused on supporting the skills of providing essential health services related to promotive, preventive, curative, rehabilitative and palliative functions. PRIMA cadres also practice campaign skills to prevent non-communicable diseases and malnutrition with the puskesmas.

For a fast and accurate analysis system, PRIMA cadres are actively using digital-based applications to collect data, to identify vulnerable individuals so they can access health services. In its journey, PN PRIMA's digital intervention has also made use of the "Nutrition Report" feature to report findings of cases of nutritional problems in an area. This includes creating a monitoring ecosystem that supports each other between PRIMA Cadres and puskesmas through access to real-time data from the [PN PRIMA Dashboard](#).

In 2022 CISDI implemented a health application development project for risk assessment of non-communicable diseases, including hypertension, diabetes and heart disease. Through this innovation, we integrate efforts to collect data and risk profiles with direct community intervention at PN PRIMA. The development of artificial intelligence involved 7,500 respondents as a sample in conducting a risk profile for non-communicable diseases. In addition, the development of data collection results is continued to create a dashboard that can be used to track and monitor health status in the working area of the Puskesmas.

Although the implementation of PN PRIMA in the first phase ended in September 2022, the continuity plan is welcomed by stakeholders. In 2023 we will continue to expand PN PRIMA's work while continuing to improve into a program that can continue to support meaningful community involvement.







# PUSPA

## (PUSKESMAS TERPADU DAN JUARA)

Throughout 2022, CISDI in collaboration with the Government of West Java continued to encourage innovation in handling COVID-19 through PUSPA (Puskesmas Terpadu dan Juara). PUSPA was implemented in 100 Puskesmas in 12 districts/cities in West Java including Depok, Bogor City, Bekasi City, Bandung City, Tasikmalaya, Bogor Regency, Bekasi Regency, Karawang, Bandung Regency, Garut, Indramayu, and Cirebon.

Dominated by young people, PUSPA develops various innovations to strengthen public health at the local level, such as community interaction spaces that activate and optimize primary health services, especially in addressing health problems in each region. Various spaces were created, from outreach, advocacy, and discussion in order to bring access to non-communicable disease (NCDs) services and nutrition fulfillment for children and pregnant women closer.

During the COVID-19 pandemic in 2022, the PUSPA puskesmas were ready to reduce the death rate. This achievement was shown from the reports of 12 regencies/cities in the PUSPA intervention area which had decreasing mortality rate related to COVID-19 from 0.49 per 100,000 population to 0.11 per 100,000 population in July - October 2022.

PUSPA was also facing a significant impact of the pandemic disruption on essential services, where not all districts/cities had equal capacity in meeting identification and reporting standards. Responding to this, PUSPA had also expanded its work focus on strengthening other essential services, such as prevention of NCDs and malnutrition of children and pregnant women. One of the ways to encourage this step was through increasing the internal capacity of health service providers so that they can meet the Minimum Service Standards (SPM).

In 2022 CISDI continued the agreement with the Government of West Java for the implementation of the PUSPA program until 2024. This joint commitment is also an opportunity to expand the framework for cross-sectoral collaboration, open up space for innovation, as well as continue good practices for improving primary health services in West Java.





# HEALTH LEARNING PLATFORM

In building interventions to strengthen primary health services, we believe that inequality in capacity and skills is a trigger factor for sub-optimal service quality. Thus, the Health Learning Platform continues to exist and becomes a 'learning space' primarily for health service providers.

Health Learning Platform is integrated into every primary health service strengthening program as an integrated cycle that connects the process of learning, empowering, to investing in change. In 2022, Health Learning Platform activities are embedded in the PN PRIMA and PUSPA programs through 67 learning sessions that reach 1,121 health cadres and 626 health workers in 8 cities/districts in Indonesia. 2022 will also be a momentum to sharpen the Health Learning Platform approach through a market research framework, sharpening the learning curriculum, including increasing internal skills in delivering training sessions.

The Health Learning Platform has expanded its reach, not only for health service providers or activators, but also for local governments in strengthening health perspectives and insights. In addition to expanding the reach, we also expand the collaboration. One of them is by collaborating with the private sector to train cadres, village government, and health workers in Sampit, Central Kalimantan. In our vision, the Health Learning Platform will continue to develop as a complete tool for formulating and delivering reliable learning to increase the capacity of health resources.







# OUR WORK

## STRATEGIC PLANNING FOR HEALTH SYSTEM REFORM

CISDI plays the role as a strategic stakeholder partner by bridging the gap between evidence and practice, as well as between good practice and policy substance. We gather analysis and evidence to map the landscape, gaps in systems, and gaps in development and health discourse.



# FORESIGHT: MENATA MASA DEPAN 'BARU' SISTEM KESEHATAN DI INDONESIA

A complete health development planning is the basis of effective implementation and supervision of development. For this reason, foresight is expected to meet the 'intact' criteria that take all aspects of 'what' is aimed at health development and 'how' it is achieved into account. Furthermore, it is 'complete' as it does not only involve quantitative and qualitative scientific methodologies, but also involves all development stakeholders.



## SHAPING THE FUTURE OF PRIMARY HEALTH SERVICES

Foresight, to organize the future of primary health care, s carried out by CISDI together with the Indonesian Academy of Sciences (AIPI).

This study summarizes the actual conditions of primary health services in Indonesia based on a scan of challenges that take into account socio-economic-political aspects in policy dynamics.

This study report was also prepared with refinement through public and expert discussions, until it was officially submitted to the Indonesian Ministry of Health on September 8, 2022.

[DOWNLOAD](#)

## ORGANIZING THE INDONESIAN HEALTH HUMAN RESOURCES MARKET (FORTHCOMING)

CISDI uses the foresight methodology to examine the human resource planning strategy for the health sector in Indonesia. This study has two main objectives. First, mapping future challenges and policies that must be prepared to manage human resources in the health sector in Indonesia. Second, provide input for the human resource pillar concept in the reform of the National Health System. This study is targeted for completion in the final quarter of 2023 as well as completing a holistic foresight studies for policy-making process.





# RPJMN 2025–2029 STUDY: TOWARDS HEALTH FOR ALL THROUGH CROSS- SECTORAL STRATEGIES

Health in All Policies (HiAP) has developed in various health discourses and discourses at the global level. HiAP is an approach that addresses intersectional health problems by recognizing that public health is not only influenced by health sector programs alone but also by policies outside the health sector.

Throughout August to December 2022, CISDI is carrying out a study of the 2025-2029 National Medium Term Development Plan (RPJMN) entitled "Menuju Health for All Melalui Strategi Lintas Sektor" (Achieving Health for All through Cross-sector Strategies). This strategic study aims to summarize theories, concepts as well as challenges related to HiAP in the national context. The review in this study also examines global strategies related to health-oriented development, as well as policy practices that strengthen the relationship between the health system and other systems outside of health, involving cross-sectors; local-national government, private sector, and community.

This study strengthens our efforts to provide a comprehensive framework for analyzing social and environmental determinants of health, such as information technology innovation, social and gender norms, legal norms, environment, education, and so on. During 2022, CISDI has also conducted research and advocacy on sexual and reproductive health issues, eliminating sexual violence, multi-sectoral action within the Healthy Life Society Movement (Germas), health data governance, and personal data protection. We have developed this framework as a manifestation of intersectional evidence-informed policymaking on policy dynamics that have an impact on the public interest.







1st Panel Discussion

*Pandemic Prevention, Preparedness, and Response:  
Time for New Approaches*



# EXAMINING THE GLOBAL HEALTH ARCHITECTURE

In examining the global health architecture, CISDI links strategic interventions to global health systems and governance and mobilizes civil society participation on the issue. There are few strategic situations that support the advocacy targeting funding mechanisms for equitable access to vaccines, such as the establishment of the Pandemic Fund, the design of the Financial Intermediary Fund (FIF), and the Indonesian Presidency at the G20 Summit.

This intervention framework is carried out with national and international civil society partners, including to produce situation analysis reports, conduct national and regional consultations, to promote issues in national, regional and global discourse.

In July 2022, CISDI with the Joep Lange Institute (JLI), the Public Interest, and Queen Mary University of London published a policy paper "Designing FIF with the Principles of Global Public Investment". Efforts to ground the principles of Global Public Investment continue in a series of consultations with stakeholders and the media.

Together with C20 and PRAKARSA, we took part in hosting the agenda of civil society organizations during the G20 countries meeting in Indonesia and became strategic partners in the implementation of the G20 Side Event - Redesigning Pandemic Prevention, Preparedness and Response in Bali in November 2022.





## OUR WORK

# RESEARCH-BASED ADVOCACY: SOCIAL DETERMINANTS AND HEALTH POLICY

Kami percaya bahwa upaya meningkatkan derajat kesehatan publik memerlukan pendekatan yang holistik. Untuk itu, selain melakukan pendekatan berbasis sistem untuk memperkuat layanan kesehatan primer, kami tidak mengabaikan faktor-faktor sosial, perilaku, dan kebijakan yang juga mempengaruhi dinamika kesehatan publik. Di antaranya seperti pengendalian konsumsi produk yang berbahaya untuk kesehatan dan pengendalian faktor risiko penyakit tidak menular.







# TOBACCO CONTROL

CISDI has been working on reducing tobacco consumption since 2015 and on tobacco control advocacy for 5 years. We have been productively conducting research to support our policy advocacy. This year, we are conducting a study on the theme of cigarette consumption and poverty which adds to the urgency to control tobacco in terms of reducing the affordability of cigarettes for the poor.

By collaborating with University of Illinois Chicago (UIC) and Campaign for Tobacco-Free Kids (CTFK), CISDI conducts research on the effect of tobacco spending on household spending allocations (crowding-out effect) and on the level of poverty in Indonesia (impoverishing effect). The two researches have been consulted with the relevant ministries/agencies to be used as material for consideration in determining excise tariff policies in 2023. We have also summarized research related to tobacco control from previous years into an anthology.

To mobilize public support for tobacco tax excise, we have gathered 19 youths, out of 1769 applicants, within the age of 15-25 through the Youth Representative (DPRemaja), in which they become a 'board member' to campaign for tobacco control in their respective areas. During the recess period, DPRemaja members carried out various creative actions, from campaigning to public transportation drivers in Cimahi, to the three-day smoke-free challenge in Palu, and many more. Some members of DPRemaja even managed to hold audiences with local officials to voice tobacco control issues in their respective regions. At the main event of the “Public Audience Meeting”, which brought together members of the DPRemaja with members of the DPR RI and related Ministries, 1,000 portraits of support from the community and paintings depicting their activities during recess were presented on the National Library Auditorium stage.





# DI BALIK SATU BATANG

THURSDAY, 24 NOVEMBER 2022



CISDI also explores new approaches to counterback counter-narratives about tobacco control that links the welfare of tobacco farmers and workers to reject tobacco excise policies. The documentary movie “Behind One Batang” shows the reality of the lives of tobacco workers, including brand presenters, cigarette factory CISDI also explores new approaches to counterback counter-narratives about tobacco control that links the welfare of tobacco farmers and workers to reject tobacco excise policies. The documentary movie “Behind One Batang” shows the reality of the lives of tobacco workers, including brand presenters, cigarette factory workers and tobacco farmers. We hope this movie, which has been watched 5,000+ times on the CISDI Youtube Channel, will reach more of the public who are unfamiliar with the issue of tobacco control and balancing the discourse on the welfare of tobacco workers who still need to continue to fight for, in contrast to the issue of tobacco control which should not be a threat to their welfare.

At the end of 2022, the Indonesian Ministry of Finance announced an increase in excise rates for 2023 and 2024, the first time the government has used a multi-year approach to increasing excise rates. Despite the average rate increase of only around 10%, this approach should be appreciated to ensure that cigarette prices continue to increase during crucial times until 2024, such as the momentum of the general elections. CISDI and a network of partners/organizations, along with the government support, continue to voice the urgency of tobacco control through excise and price policies. In 2023, CISDI will continue and expand its tobacco control portfolio, from previously focusing on excise policies to other tobacco control policies that also affect the affordability and demand for tobacco products.





# CONTROL OF SUGAR-SWEETENED BEVERAGES CONSUMPTION

Preventing non communicable diseases through tobacco control has been one of our main focuses. Since 2021, CISDI began to enter into the issue of extensification of excisable goods, especially on sugar sweetened beverages (SSB). Until 2022 passes, the rules for imposing excise duty for MBDK are still in the planning and discussion by the government. During this process, CISDI took an active role in the SSB excise advocacy mobilization process through a series of research and discussions with policy holders.

Throughout 2022, we have met and discussed with various ministries/institutions such as the Ministry of Health, the Ministry of Finance, the House of Representative, the Indonesian Food and Drug Authority, the Ministry of National Development Planning, the Ministry of Industry and so on to gather support and encourage the implementation of the excise policy for SSB as soon as possible.

In an effort to promote evidence-based policy, CISDI published a number of studies related to SSB excise. One of them is a study developed through an online survey regarding public support and perceptions of the SSB excise plan which managed to reach around 2,500 respondents from all over Indonesia. The survey results show that 80% of the public supports the SSB excise plan. In addition, one of CISDI's latest research entitled "Price Elasticity of Demand for Sugar Sweetened Beverages (SSB)" examines the effectiveness of the SSB excise tax on price changes and consumption in Indonesian society. One of the findings from this research is that the imposition of a 20% SSB excise can effectively reduce the consumption level of SSB in society by 17.5%.







**700 JUTA ORANG**  
**TERGOLONG OBESITAS**  
- WORLD HEALTH ORGANIZATION -



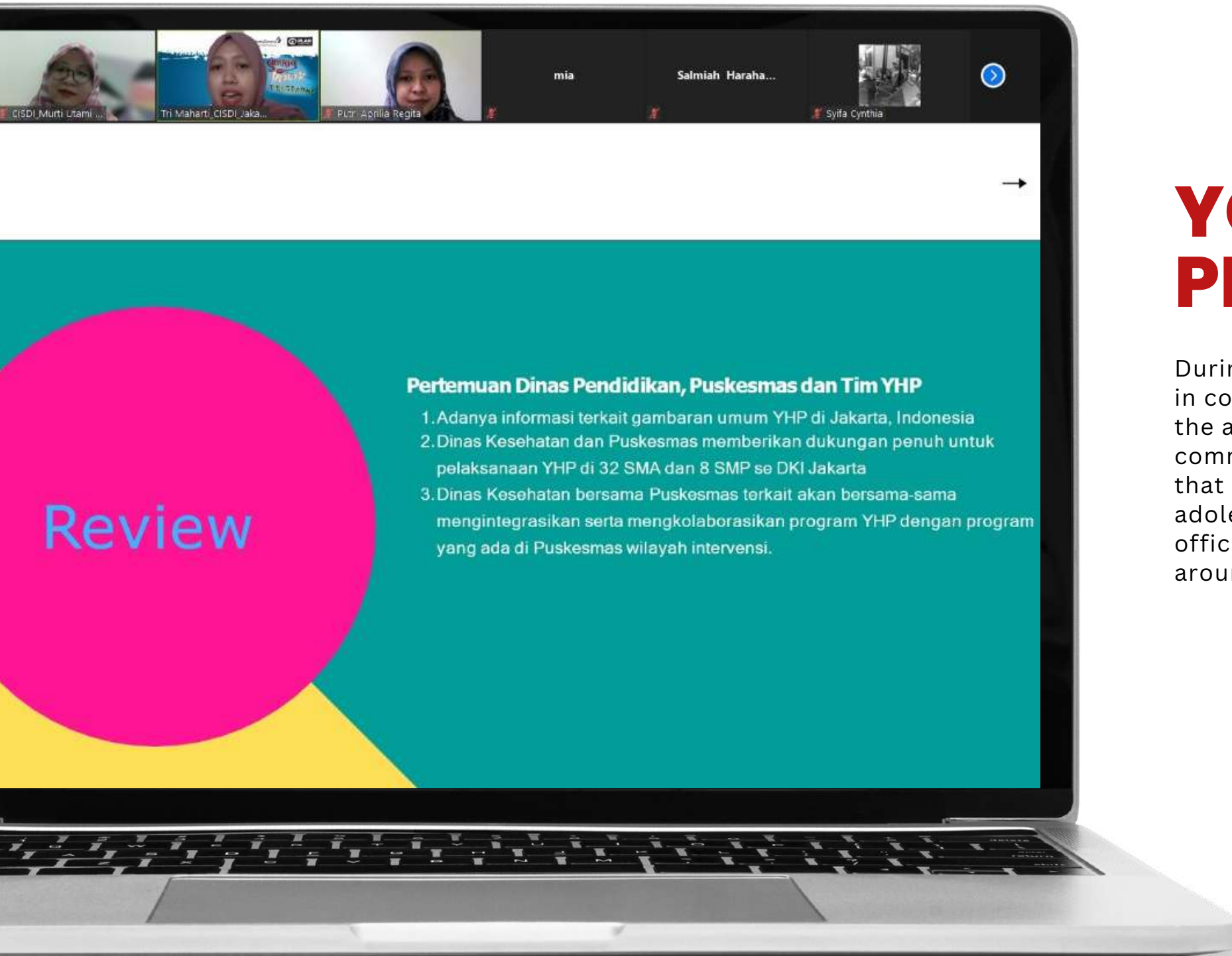
Our advocacy efforts on the SSB issue are also supported by a series of offline and online public activities. Throughout 2022, we held four Twitter Spaces and three public discussions specifically discussing the dangers of SSB and the urgency of pushing for the implementation of the SSB excise tax. This discussion also involved experts, influencers, and public figures as speakers. One of the Twitter Spaces, entitled “Bitter Promise of Sweet Drinks”, managed to gather more than 4,000 listeners. This proves the increasing public interest in the issue of controlling SSB consumption.

Meanwhile, public support for SSB control through the implementation of excise duty is also increasing. This can be seen from the number of signatories to the petition “Diabetes and Obesity Lurks: Protect the Public from the Dangers of Sweetened Drinks” which CISDI started in October 2022 on the change.org platform. Until the end of 2022, this petition has managed to gather more than 15 thousand public support.

However, we are still maximizing various spaces and opportunities to raise collective awareness regarding controlling SSB consumption. Among them is through the Forum for Young Indonesians festival which this year raises the theme “The World of Deception on Sugar Sweetened Beverages” which brings together representatives of youth and grassroots organizations with policy makers in order to encourage the implementation of the SSB excise tax. This series of events began with policy advocacy training for 16 youth organizations from all over Indonesia. At the peak event, CISDI invited representatives from the Ministry of Health, Ministry of Finance, and representatives of organizations and young people to discuss the urgency of the SSB excise policy in Indonesia. Then maximizing public spaces, we commemorate World Diabetes Day by holding an offline activation in the form of an art installation exhibition at Christina Martha Tiahahu Park, South Jakarta. This installation was on display for 5 days and was visited by more than 500 people.

During the mobilization of this issue, CISDI also formed the SSB excise coalition consisting of 12+ community organizations in the health sector that support MBDK excise policies, including the Indonesian Consumers Foundation (YLKI), City Citizens Forum (FAKTA), Center for Health Policy & Management (PKMK) FK-KMK UGM and so on. In 2023, CISDI will continue and expand a series of research and advocacy to accelerate the implementation of the SSB excise tax in Indonesia.





## YOUTH INVOLVEMENT AS PEER EDUCATOR

During the second half of 2022, CISDI continues to intervene in youth education and empowerment in collaboration with the Plan International Indonesia Foundation in the Young Health Program. With the aim of increasing awareness and understanding of youth about the prevention of non-communicable diseases (NCDs), this program is designed to influence various community groups that are closely related to adolescents, so the variety of training offered targets not only adolescents, but also parents, teachers, health workers in health centers, as well as related regional officials. It is hoped that not only teenagers who want to change their behavior, but the adults around them and public facilities will also support these changes.





## OUR WORK

# TRACK SDGs

Committed to encouraging the achievement of Sustainable Development Goals (SDGs), we continue to develop TRACK SDGs as a platform for sharing information, knowledge and learning between development actors to achieve SDGs in Indonesia. Throughout 2022, it was recorded that 97 development actors from 19 provinces joined as TRACK SDGs members which include communities and civil society organizations, including social businesses and academic institutions.

Through the TRACK SDGs platform, CISDI builds awareness of the importance of multi-sectoral collaboration in achieving sustainable development targets. Some of the activities that support this goal include: (1) organizing capacity building activities for grassroots development organizations/communities; (2) bridging discussion and collaboration between civil organizations and the government; (3) bringing up stories of good practices from grassroots organizations; and (4) facilitate regular meetings between TRACK SDGs members for networking.

In particular, we also realize that to solve problems and achieve health development targets, a holistic understanding of the determinants of health is required. Environmental factors, education, gender, social norms, technology, and others greatly affect the degree of public health. Based on this paradigm, TRACK SDGs conducts research and advocacy in encouraging the implementation of Health in All Policies (HiAP) at the national and sub-national levels.

During 2022, advocacy for the implementation of HiAP will be carried out through the launch of a policy brief document on the importance of managing health data and information, as well as survey results regarding the challenges faced by non-government development organizations during the COVID-19 pandemic. Apart from that, TRACK SDGs also actively builds networks and public discourse on issues that are close to people's daily lives, such as Universal Health Coverage, regional vulnerability and resilience to climate change, and youth employment. In its implementation, this activity utilized open public spaces and collaborated with 16 community partners, and succeeded in reaching more than 166 participants who attended to enliven the activity.



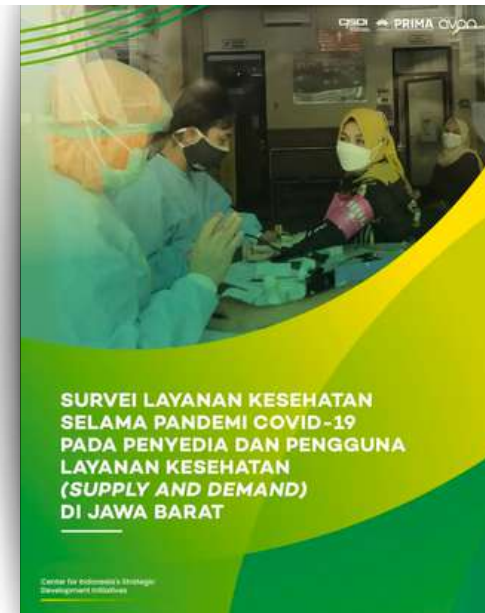




# RESEARCH AND PUBLICATION

# STRENGTHENING PRIMARY HEALTH SERVICES

## Research Report & Results



### Survei Layanan Kesehatan Selama Pandemi COVID-19 pada Penyedia dan Pengguna Layanan Kesehatan (Supply and Demand) di Jawa Barat

This survey was conducted to be able to support interventions that are right on target and right on need, by quickly mapping the capacity of the puskesmas and the needs of the community in the PN PRIMA intervention areas, namely in Bandung City, Depok City, and Bekasi District, West Java Province.

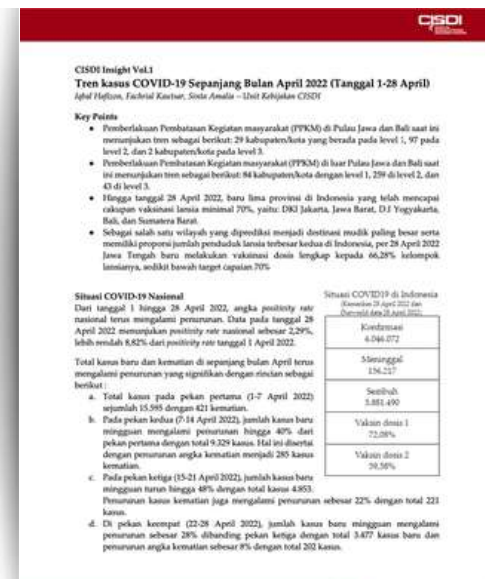
[UNDUH DOKUMEN](#)

### Laporan Asesmen Awal: PN-PRIMA

The Laporan Asesmen Awal (the initial assessment) includes an assessment of the situation, an assessment of the factors that support or hinder the process of program adoption, implementation and sustainability, stakeholder analysis, and assessment of service provider components.

[UNDUH DOKUMEN](#)

## Policy Review



### CISDI Insight Vol.1: Tren kasus COVID-19 Sepanjang Bulan April 2022

CISDI Insights Vol. 1 reviews the trend of Imposing Restrictions on Community Activities (PPKM) on Java and Bali islands throughout April 2022. This document highlights the development of the COVID-19 situation at the national and regional levels to the handling steps and potential risks that may occur.

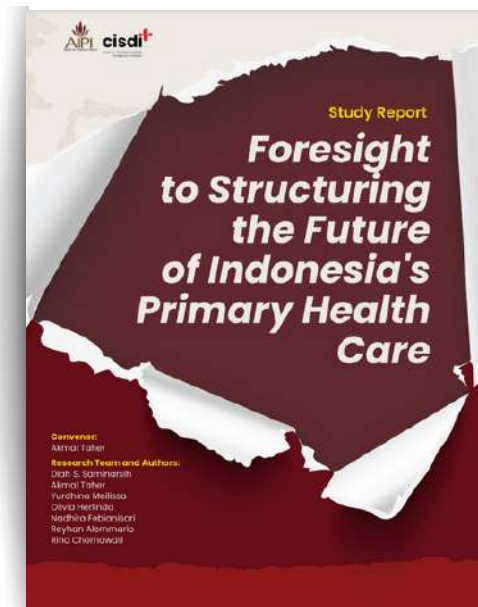
[UNDUH DOKUMEN](#)



# RESEARCH AND PUBLICATION

# HEALTH SYSTEM REFORM

## Research Report & Results



### Foresight to Structuring the Future of Indonesia's Primary Health Care

This study was launched by CISDI together with AIPI to map issues, trends, discontinuities, weak signals, and wildcards which as a whole pose challenges to the implementation of primary health services in Indonesia.

[UNDUH DOKUMEN](#)



### CISDI Health Outlook 2022

Through the Health Outlook 2022, CISDI developed three scenarios which were developed to provide approaches and directions for health development policies in 2022 for policy makers and various development actors.

[UNDUH DOKUMEN](#)

## Policy Review



### Mendesain FIF dengan Prinsip Global Public Investment

This policy paper offers a design of a financial intermediary fund (FIF) – the discussion of which is currently ongoing in the G20 process under the Indonesian presidency – through the principles of global public investment (GPI).

[UNDUH DOKUMEN](#)





# RESEARCH AND PUBLICATION

## TOBACCO CONTROL

### Research Report & Results



#### Efek Crowding-out Konsumsi Tembakau di Indonesia

This study found that spending on tobacco reduces household spending allocations for essential commodities such as spending on food, clothing, housing, education, and health.

[UNDUH DOKUMEN](#)

#### Efek Pemiskinan Akibat Konsumsi Tembakau di Indonesia

This study found that the number of poor people increased by 8.8 million if the cigarette spending distortion was removed from the calculation of household expenditure.

[UNDUH DOKUMEN](#)

### Publikasi Ilmiah

Do parental smoking behaviors affect the offspring's stunting and overweight status?, Journal of Family and Economic Issues, February 2022

[AKSES JURNAL](#)

Economic cost of tobacco attributable disease in 2019, Tobacco control, March 2022

[AKSES JURNAL](#)

Changes in Smoking Status and Behaviors After the First Ten Months of COVID-19 Pandemic in Indonesia, Nicotine and Tobacco Research, March 2022

[AKSES JURNAL](#)





# RESEARCH AND PUBLICATION

# FOOD POLICY / SSB CONSUMPTION CONTROL

## Research Reports and Results



### Elastisitas Harga Permintaan Minuman Manis Dalam Kemasan (MBDK) di Indonesia

This policy summary was compiled based on the results of a CISDI study regarding the price elasticity of demand for SSBs products using the 2021 National Socio-Economic Survey (SUSENAS) data. This research aims to see how the community responds to price increases for some SSBs products when taxes are applied.

[UNDUH DOKUMEN](#)

### Penerapan Cukai Minuman Berpemanis Dalam Kemasan (MBDK) di Asia Tenggara: Pembelajaran untuk Indonesia

This research uses the literature review method to see how the process of implementing Sugar-Sweetened Beverages (SSB) excise in Southeast Asia, supporting factors, obstacles, and challenges faced as learning materials for implementing SSB excise in Indonesia.

[UNDUH DOKUMEN](#)

### Survey Pemahaman dan Dukungan Masyarakat terhadap Cukai Minuman Berpemanis dalam Kemasan (MBDK)

This publication is a summary of a survey research conducted by CISDI to determine the level of knowledge, accessibility and public support for the plan to implement the SSBs excise tax in Indonesia. The research was conducted by involving a total of 2,605 respondents aged over 18 years from all provinces in Indonesia.

[UNDUH DOKUMEN](#)

### Minuman Berpemanis Rendah Kalori (Low-or Zero-Calorie Sweetened Beverages): Dampak Kesehatan dan Penerapan Kebijakan Cukai di Berbagai Negara

CISDI released the results of a scoping review regarding the impact of artificial sweeteners on health and the practice of implementing artificial sweetener excise in various countries.

[UNDUH DOKUMEN](#)





# KAJIAN DAN PUBLIKASI

## PENGENDALIAN KONSUMSI MINUMAN BERPEMANIS DALAM KEMASAN (MBDK)

### Kajian Kebijakan



#### Ringkasan Kebijakan: Urgensi Implementasi Kebijakan Cukai Minuman Berpemanis Dalam Kemasan (MBDK) di Indonesia

This policy brief presents the evidence base of the urgency of implementing the SSBs excise tax in Indonesia by considering the negative impact of high consumption of SSBs products on various aspects of development such as health, social and economics.

[UNDUH DOKUMEN](#)

### Media Pembelajaran

#### Seri Video: Sweet Academy

Melalui Sweet Academy, CISDI mengampifikasi pemahaman tentang pentingnya pengendalian konsumsi gula, garam dan lemak. Sepanjang tahun 2022, telah tayang tiga seri Sweet Academy yang dapat diakses melalui YouTube.



Sweet Academy Volume 1:  
Gula, Garam, Lemak, dan Penyakit  
Tidak Menular



Sweet Academy Volume 2:  
Akses, Harga, dan Pemasaran  
Minuman Berpemanis dalam Kemasan



Sweet Academy Volume 3:  
Solusi Jitu Mengurangi Konsumsi  
Minuman Berpemanis Dalam  
Kemasan (MBDK)

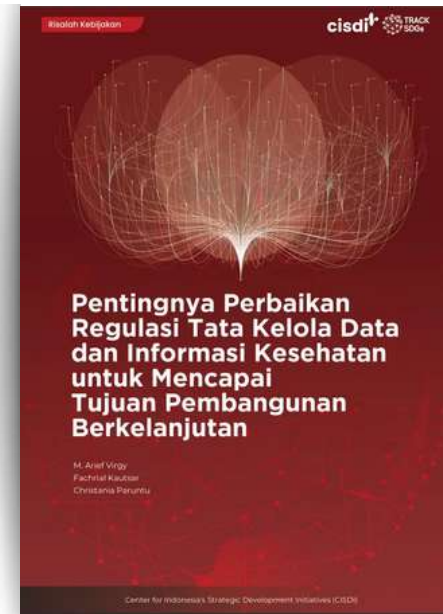




# KAJIAN DAN PUBLIKASI

## HEALTH IN ALL POLICIES

### Kajian Kebijakan



#### Ringkasan Kebijakan: Urgensi Implementasi Kebijakan Cukai Minuman Berpemanis dalam Kemasan (MBDK) di Indonesia.

This policy brief presents the latest analysis and evidence regarding the importance of improving health data and information governance, particularly from the interoperability and data standard aspects, as well as the readiness of health service facilities.

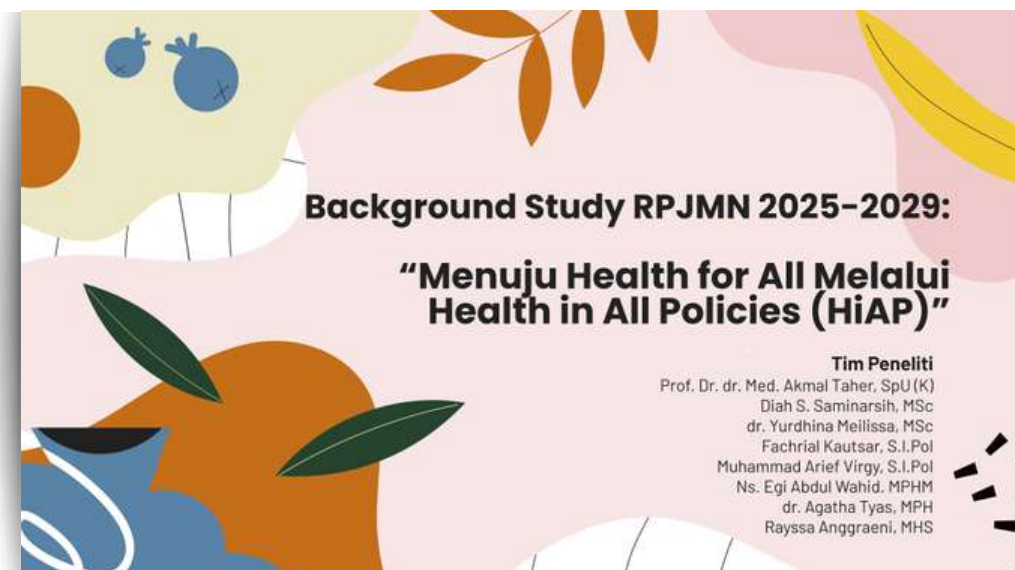
[UNDUH DOKUMEN](#)

#### Pentingnya Perspektif Kesehatan dan Gender dalam Penyusunan RKUHP

This document shows the importance of the involvement of civil society in resulting legal products that create benefits and avoid vulnerabilities and/or deepen existing vulnerabilities for affected individuals/groups.

[UNDUH DOKUMEN](#)

### Laporan dan Hasil Penelitian



#### Background Study RPJMN 2024-2029: “Menuju Health for All melalui Health in All Policies”

Laporan ini menyajikan analisis dan rekomendasi arah pembangunan dan kebijakan aksi multisektor untuk mencapai Health for All di Indonesia berdasarkan framework Health in All Policies yang dikembangkan oleh Australia Selatan dan WHO.

[UNDUH DOKUMEN](#)





# IMPACT AND REACH MAP



Throughout 2022, CISDI gathered the outreach and collaboration of 1,433,095 people directly and indirectly in 24 provinces in Indonesia.

# 1.433.095 people

That consist of:

## 9.719

Healthcare  
Workers

## 211.835

Young People

## 6.928

Health  
Cadres

## 184.795

Vulnerable  
Groups





# OUR PARTNERS

## STRENGTHENING PRIMARY HEALTH SERVICES



CISDI collaborated with the Asian Venture Philanthropy Network (AVPN) to create an Inclusive Community-Based Surveillance (SBM) at 22 Community Health Centers in Bandung City, Depok City, and Bekasi Regency. This Inclusive SBM intervention is the foundation for restoring essential health services for nutrition, hypertension, diabetes, and vaccinating vulnerable groups that have been disrupted during the COVID-19 pandemic.



The Bill & Melinda Gates Foundation is developing an investment plan for digitizing health services in Indonesia. CISDI is trusted as a partner to make essential preparations before starting interventions – including to facilitate observation of the current situation in several provinces as a basic assessment of people's perceptions of digital health services.



Since 2021, PUSKAPA has become a strategic partner of CISDI in providing policy input to the government regarding aspects that need to be considered for the national vaccination program and essential health services at Puskesmas to be more accessible to the vulnerable groups.



Savica provided technical assistance to CISDI to develop a Social and Behavioral Change Communication (SBCC) strategy for the PN-PRIMA program. The SBCC strategy is focused on increasing COVID-19 vaccination coverage and restoring services for hypertension, diabetes, and nutrition for pregnant women and children under five years. Savica also assisted in creating communication materials, training health workers and cadres, and monitoring and evaluating strategy implementation.



Center for Economics and Development Studies Universitas Padjajaran (CEDS Unpad) assisted CISDI in analyzing the effectiveness of PUSPA program cost. The research was separated into two main topics: evaluating the PUSPA program from an economic perspective and tested the resilience of the PUSPA puskesmas during a pandemic.



CISDI is part of the Risk Communication & Community Engagement Working Group (RCCE WG), a group for networking, sharing and collaborating around risk communication during the COVID-19 pandemic. A total of 51 institutions have joined, ranging from non-governmental organizations, the private sector, academia, to the government.



The Scaling Up Nutrition (SUN) movement is an integrated effort to address all forms of malnutrition with multi-sector involvement: the government, civil society organizations, the business world, development partners and academia. CISDI acts as the Steering Committee for the SUN CSO Network that connects 29 civil society organizations that have a focus on improving people's nutritional status, including preventing stunting in Indonesia.



CISDI in collaboration with the Katingan Mentaya Project organized training to increase the capacity of health service providers working in the Katingan Mentaya Project area, a program managed by PT Rimba Makmur Utama (RMU). This aims at developing and implementing a sustainable land use management model. This project will be carried out in 4 districts, namely Seranau District, Pulau Hanaut District, Mendawai District, and Kamipang District, Central Kalimantan.



MAFINDO and CISDI collaborated to train 100 health cadres in Gunung Putri sub-district, Bogor Regency through training, mobile educational cars, short films, and public service advertisements. Apart from vaccines and elderly health, cadres are also trained in providing counseling on how to check facts related to Covid-19 and vaccines through social media and in person.



CISDI together with Tentang Anak collaborated to organize cadre education classes, provide access to education through the Tentang Anak application, webinars, and provide consultation opportunities with experts from the Tentang Anak team for the PN PRIMA internal team to develop nutrition intervention programs.



CISDI is part of the Global Transform Health Coalition which focuses on policy analysis, preparation of recommendations, and implementation of coalition programs to strategically coordinate various digital-based health service transformation efforts for its members. At the national level, joint action was initiated by CISDI's strategic partner in primary health care reform, the Indonesian Public Health Association (IPHA).





# OUR PARTNERS

## POLICY ADVOCACY ON CONTROL OF ACCESS TO RISKY CONSUMPTION



Together with the Campaign for Tobacco Free Kids (CTFK) from Bloomberg Philanthropies, CISDI has voiced and pushed for an increase in tobacco excise since 2015. During 2021-2022, this partnership will grow with opportunities for involvement in the smoking cessation program or smoking cessation assistance with WHO Indonesia. In addition, tobacco excise advocacy efforts are ongoing through gathering evidence, activating and raising awareness for young people, as well as high-level meetings with policy makers.



Since mid-2021, the Global Health Advocacy Incubator (GHAi) has been a partner in developing advocacy directions for controlling health risk products. Particularly in controlling the consumption of SSBs which contribute to the increase in diabetes and obesity, GHAi together with CISDI initiated various advocacy-strengthening evidence through studies, content analysis, and media conversations.



Together with the Campaign for Tobacco Free Kids (CTFK) from Bloomberg Philanthropies, CISDI has voiced and pushed for an increase in tobacco excise since 2015. During 2021-2022, this partnership will grow with opportunities for involvement in the smoking cessation program or smoking cessation assistance with WHO Indonesia. In addition, tobacco excise advocacy efforts are ongoing through gathering evidence, activating and raising awareness for young people, as well as high-level meetings with policy makers.

Dalam pengendalian Minuman Berpemanis dalam Kemasan, CISDI tergabung dan menjadi rekanan dalam koalisi masyarakat sipil yang di antaranya terdiri dari:



## YOUTH ENGAGEMENT IN HEALTH POLICY ADVOCACY



CISDI works with CSSS UI, NCTC, supported by PKBI to mobilize public support and involve young people who are members of the Youth Representative Council (DPRemaja). Strategically, this partnership formulates curricula and develops youth-specific recess methods in tobacco excise policy advocacy.



CISDI was involved as a Bappenas partner in producing a situational analysis report on youth involvement in the implementation of the Sustainable Development Goals in Indonesia. This report serves as input to UNFPA in its efforts to assist the Government of Indonesia in ensuring youth's meaningful involvement in processes and interventions that affect their lives.





# OUR PARTNERS

## GLOBAL AND NATIONAL HEALTH SYSTEM TRANSFORMATION DIPLOMACY



Together with Joep Lange Institute, CISDI works for health diplomacy by proposing the creation of a Financial Intermediary Fund (FIF) with a focus on global public investment (GPI) principles. These collaborations suggest that in order to strengthen pandemic prevention, preparedness and response capacities at national, regional and global levels, FIF should prioritize inclusive, effective and equitable governance in prioritizing benefits, as well as ensuring sustainable financing, all based on the GPIs principle.



Equal International and the Pandemic Action Network (PAN) provide a forum for CISDI as a board member from representatives of civil society organizations for creating FIF, investment in financing for health emergencies, that it should be inclusive, involving the values and considerations of civil society, rather than being exclusive to the government and the private sector. Equal International and PAN are also strategic partners in implementing the G20 Side Event - Redesigning Pandemic Prevention, Preparedness, and Response in Bali in November 2022.



C20 and PRAKARSA as the host of the agenda of civil society organizations during the meeting of G20 countries in Indonesia that also become strategic partners in the implementation of the G20 Side Event - Redesigning Pandemic Prevention, Preparedness, and Response in Bali in November 2022.



CISDI is a partner of the Ministry of National Development Planning/Bappenas RI to carry out a study on the 2025-2029 National Medium-Term Development Plan (RPJMN) entitled “Menuju Health for All Melalui Strategi Lintas Sektor” (Towards Health for All Through Cross-Sectoral Strategies). This strategic study aims to summarize theories, concepts as well as challenges related to HiAP in the national context. CISDI is also a Bappenas partner in the thematic evaluation of basic health services.

## DEVELOPMENT OF TECHNOLOGY-BASED HEALTH SOLUTIONS



CISDI with NalaGenetics present a mitigation innovation that measures to reduce the risk of exposure to COVID-19 for health workers that was launched on 28 October 2021 in the form of machine learning called COVID-19 Likelihood Meter 2.0 for Healthcare Providers. This artificial intelligence system works by assessing the magnitude of the risk of health workers and staff in health facilities when a COVID-19 infection occurs. Then this machine learning also works to help determine who is prioritized to receive a PCR test related to the risk profile of people with symptoms or suspected of being exposed to COVID-19 when resources are limited.



Bersama Runkicker, CISDI mengembangkan sebuah alat penilaian risiko kesehatan berbasis mobile yang akurat dan modular, secara terus-menerus dapat menilai risiko hipertensi, diabetes, dan penyakit jantung pembuluh darah seorang individu dengan entri data yang minimal.





# CISDI IN PUBLIC

CISDI cannot be separated from the media. Not only a partner, the media is also one of the main supporters of our work to help connect us to the public. Understanding how powerful it is to spread our narratives in development and public health through the media, CISDI manages Instagram and Twitter accounts, one Instagram and Twitter accounts for the official account of the organization and four other accounts that promote specific issues. The said issues are development of primary health services (Pencerah Nusantara), advocacy for tobacco excise control (Sejua Mata), the role of non-government actors to achieve sustainable development targets (TRACK SDGs), and advocacy for controlling consumption of packaged sweetened drinks (FYI Indonesia).

Our achievements:

## MEDIA ACTIVITY SUMMARY



## RINGKASAN AKTIVITAS MEDIA SOSIAL

 <div>Instagram <b>2.711 contents</b> throughout the year</div>	<div><b>±17,8 K new followers</b> <b>±2,9 M accounts reached</b></div> <div>@cisdi_id, @pencerahnusantara, @sebelahmata_cisdi, @track.sdgs, @fyindonesians</div>
 <div>Instagram <b>2.259 tweets</b> throughout the year</div>	<div><b>±4.800 new followers</b> <b>±7,4 M impressions</b></div> <div>@CISDI_ID, @PencerahNusa, @trackSGDs, @FYIndonesians</div>
 <div>YouTube <b>97 videos</b> (37 shorts, 35 videos, 25 live streaming) throughout the year</div>	<div><b>+552 subscribers</b> <b>total 2.302 subscribers</b></div> <div>Most watched video: “A Documentary Film: Di Balik Satu Batang (Behind One Stick)”, (4.463 views)</div> <div></div>

We activate media as a means to reach public involvement. One of the ways is through the involvement of public figures/influencers, offline activities, and interactive activities through quiz and polling.





# 19 Public Discussion CIVIC SPACE

- LOKAPALA 3.0 “Habis Gelap, Terbitkah Terang?” (27th January 2022)
- Menata Masa Depan Layanan Kesehatan Primer Indonesia (16th March 2022)
- Deployment Ceremony of A Hundred of PRIMA Cadres "Jangkau yang Tertinggal, Rangkul yang Rentan" (23rd March 2022)
- Urgensi Implementasi Kebijakan Cukai MBDK di Indonesia (31st March 2022)
- Leadership Series on Primary Health Care (21st April 2022)
- Pentingnya Perspektif Kesehatan dan Gender dalam Proses Penyusunan RKUHP (19th August 2022)
- Masa Depan Pengendalian MBDK (23rd August 2022)
- Ilusi Kemiskinan dan Pengalihan Belanja Rumah Tangga karena Konsumsi Rokok (30th August 2022)
- Kolaborasi Bermakna Layanan Kesehatan Primer Berdaya (8th September 2022)
- Youth Gathering #1 “Youth as an Accelerator to Achieve Universal Health Coverage” (17th September 2022)

- Forum for Young Indonesians “Dunia Tipu-tipu Minuman Berpemanis Dalam Kemasan” (17 September 2022)
- KOLASÉ "Mewujudkan Keterwakilan Data Kelompok Rentan yang Berkeadilan lewat Tata Kelola Data Kesehatan" (14 Oktober 2022)
- Youth Gathering #2 “Engaging Youth for Climate Resilience” (15 Oktober 2022)
- Rapat Dengar Pendapat Umum Dewan Perwakilan Remaja (2 November 2022)
- Satu Dekade Pencerah Nusantara “Aksi Bersama untuk Indonesia Sehat Setara” (5 November 2022)
- G20 Side Event "Redesigning Pandemic PPR: Lessons Learned and New Approaches (14 November 2022)
- Exclusive Premiere “Di Balik Satu Batang” (25 November 2022)
- Elastisitas Harga Permintaan untuk MBDK (29 November 2022)
- Youth Gathering #3 “Promoting Decent Youth Employment: Rights, Protection, Voice, and Representation” (11 Desember 2022)

# 15 Twitter Space Twitter Space

- Bagaimana Mencegah Indonesia Masuk Era Survival of the Fittest? (2nd March 2022)
- Vaksin: Lindungi Aku, Kamu, dan Hidup Semua Orang (27th April 2022)
- Pandemi Endgame: Impian atau Kenyataan? (11th March 2022)
- Sweet Talk: Tipu-tipu Industri Makanan dan Minuman dalam Kemasan (18th March 2022)
- Be Kind Online: We Against Cyber Bullying (25th March 2022)
- Sweet Talk: Menjauhkan Anak dari MBDK (26th April 2022)
- Mengawal Isu Kekerasan Seksual Pasca Pengesahan UU TPKS (23rd June 2022)
- #SekolahLagi untuk Indonesia yang Sehat, Adil, dan Setara (6th July 2022)
- Pentingnya Perspektif Kesehatan dan Gender dalam Penyusunan RKUHP (8th July 2022)

- Sweet Talk: Denormalisasi Konsumsi MBDK (14 Juli 2022)
- Nakes Juga Bisa Burnout (18 Juli 2022)
- Janji Pahit Minuman Manis (29 September 2022)
- Satu Dekade Pencerah Nusantara: Aksi Bersama untuk Indonesia Sehat Setara (31 Oktober 2022)
- Komnas PT x CISDI x PKJS UI 01 (4 November 2022): “Raibnya uang belanja Ibu” (pengaruh belanja rokok terhadap alokasi belanja rumah tangga)
- Komnas PT x CISDI x PKJS UI 02 (8 November 2022): “Melihat cukai bekerja” (pembahasan urgensi dan dampak kebijakan cukai tembakau)

## HIGHLIGHTS



Lokapala 3.0  
“Habis Gelap, Terbitkah Terang?”  
27 Januari 2022



Ku Kira Ku Sehat Festival  
31st May 2022



Public Hearing of  
Dewan Perwakilan Remaja (Youth Representative)  
2nd November 2022



G20 Side Event: 'Redesigning Pandemic  
Prevention, Preparedness, and Response:  
Lessons Learned and New Approaches'  
14th November 2022



Premiere film dokumenter  
“Di Balik Satu Batang”  
24 November 2022



Kuliah Umum dan Diskusi Publik:  
Menata Masa Depan Layanan Kesehatan  
Primer Indonesia  
15 Maret 2022



Forum for Young Indonesians:  
Dunia Tipu-tipu Minuman Berpemanis  
Dalam Kemasan  
17th September 2022



One Decade of Pencerah Nusantara  
5th November 2022



Photo Exhibition “Asih Itu Hening: Kerja  
Kesehatan yang Tak Kasat Mata”  
November 2022





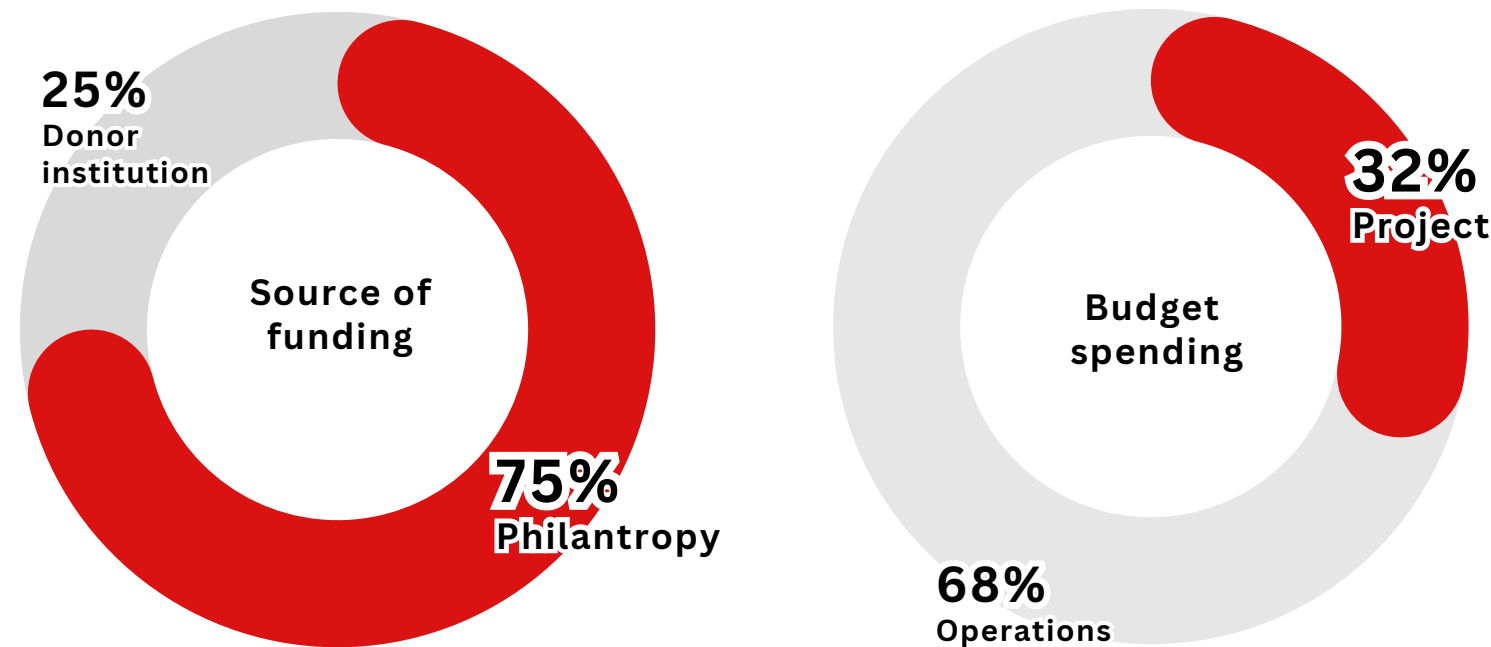
# FINANCIAL ACCOUNTABILITY

## SUMMARY OF FUND MANAGEMENT FOR 2022

In 2022, CISDI managed funds amounted to IDR 26.4 billion with 68,03% allocated for operational fund management and 31,97% allocated for project fund management.

In managing project/program funds, 25,22% is managed for 14 projects/programs that receive funding from donor agencies. Then, 74,78% of the allocation of funds for 10 projects whose sources of funding come from philanthropists.

A summary of CISDI fund management throughout 2022 can be seen in the chart below.



## AUDIT RESULT OF THE 2022 CISDI FINANCIAL STATEMENTS

A financial report audit is a form of assessment or evaluation of an entity (organization, company or institution) to produce an independent opinion or opinion from a third party regarding financial statements that are accurate, complete, relevant, fair, and in accordance with accounting principles and applicable rules.

In line with the objective of carrying out financial statement audits, CISDI has conducted audits of financial statements for 5 consecutive times since 2018 with consistent results of Unqualified Opinion, meaning there was no overall material error found. To ensure the consistency of this accountability, the processes and financial reports prepared by CISDI have been adjusted to the accounting principles that apply in Indonesia (General Financial Accounting Standards/SAK).

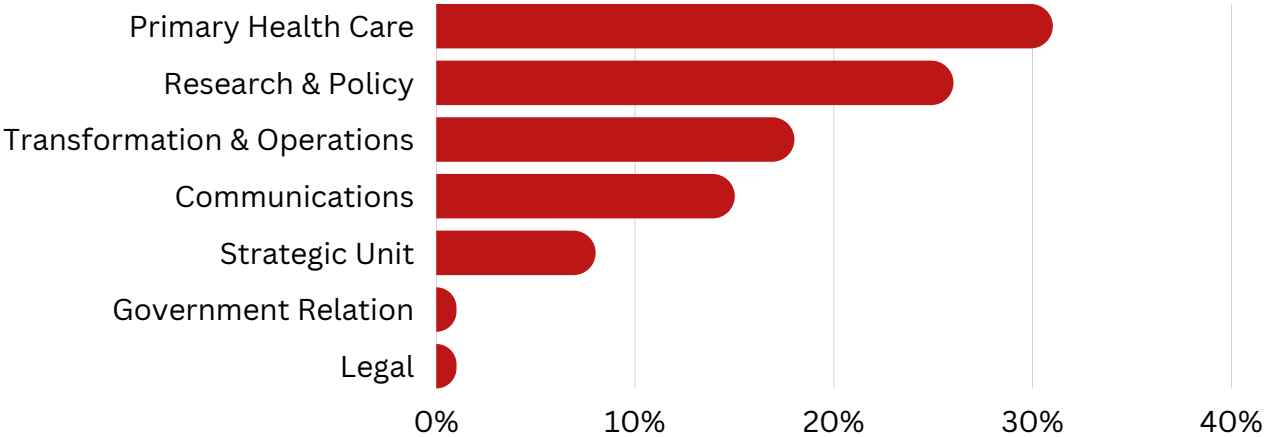


# LIFE AT CISDI

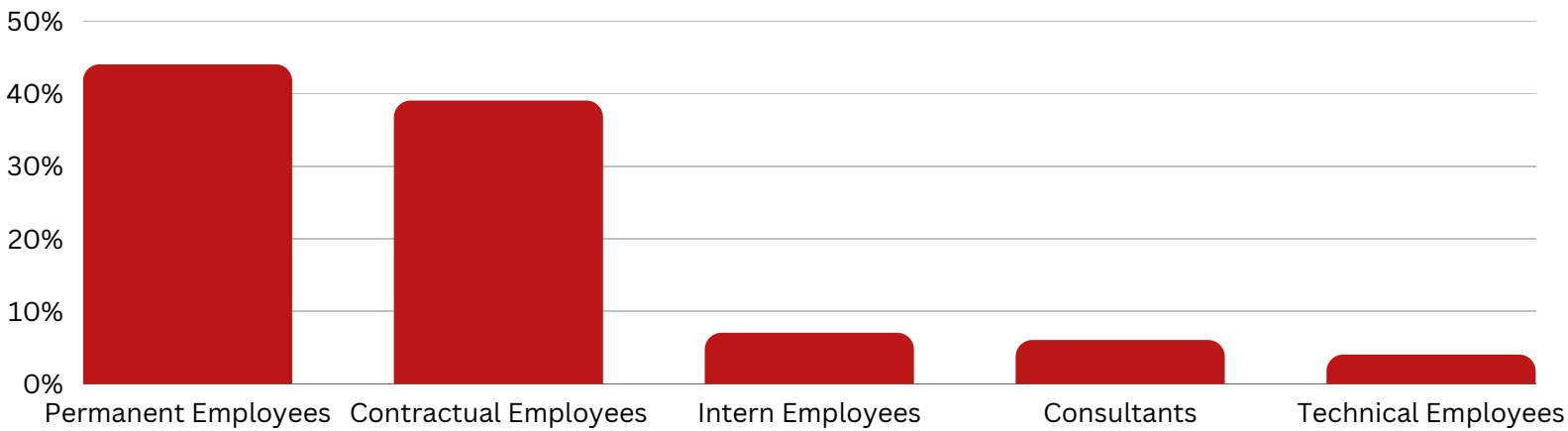
CISDI is driven by a team with cross-disciplines and expertise. In creating a conducive work ecosystem as a space for growth, CISDI also continues to strive to create a safe work environment and prioritizes the active participation of every individual in it.



## DIVISION COMPOSITION



## STAFF COMPOSITION





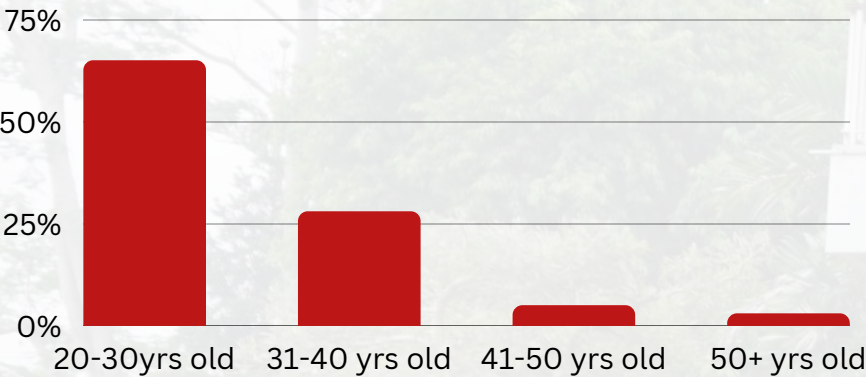


# LIFE AT CISDI

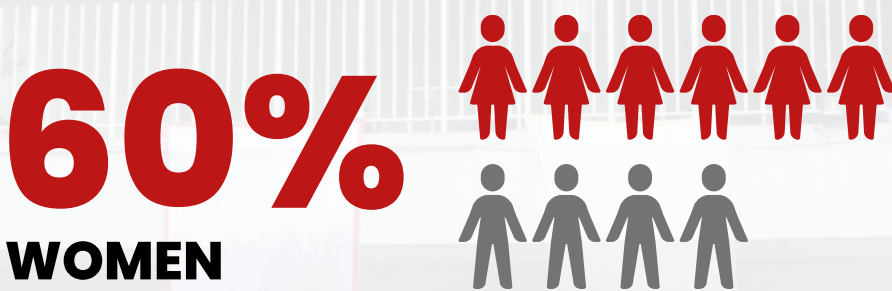
## DIVERSITY AND GROWING SPACE

CISDI realizes that every individual has their own potential and CISDI will always accommodate by giving them a place to grow.

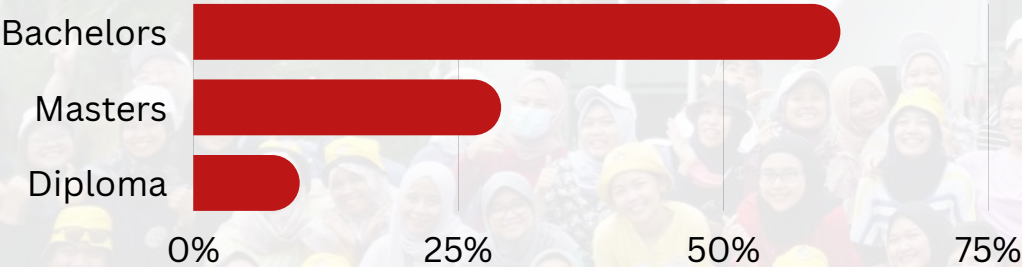
### AGE



### SEX



### EDUCATION



## ORGANIZATIONAL DEVELOPMENT

CISDI believes that to create a positive impact, we need to invest in the people who are working behind it. Thus, CISDI supports the development of every team to always increase their skill and knowledge through various training programs. In 2022, CISDI has facilitated many learning sessions as follows:

**16**

Internal learning sessions in 2022

- RabuBelajar : SOP HR : Overtime & task force
- RabuBelajar : Nutrition
- RabuBelajar : G20 Presidency of Indonesia
- RabuBelajar: Pandemic Update (2 session)
- RabuBelajar : Systematic Review for Evidence Based Policy
- RabuBelajar ft. CEDS - Rasch model on implementation research
- NVIVO training
- Impact evaluation training
- Evidence based for health policy-making training
- Capacity building for PHC team
- Project management Training
- Social media training
- STATA training
- Digital marketing training
- Analysis and data science training



**CONNECT WITH**  
**CISDI**

**CENTER FOR INDONESIA'S STRATEGIC  
DEVELOPMENT INITIATIVES (CISDI)**

Jalan Probolinggo No. 40C Menteng, Jakarta Pusat, Indonesia 10350

Telephone: (+62) 21 3917590 | Fax: (+62) 21 3913471

[www.cisdi.org](http://www.cisdi.org)



@cisdi\_id



@cisdi\_id



CISDI



CISDI